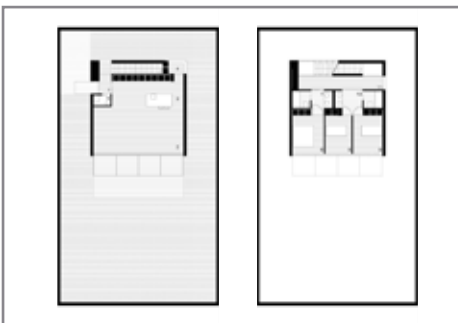




Collection Be-Urban

Collection BE URBAN presents a line of compact houses that cater to the majority of urban parcels. Collection BE URBAN, a new range of homes that offer great places to live with the use of space both indoors and outdoors, and functional well-distributed.

Designed for living



The houses BE URBAN clearly differentiate areas of activity of nocturnal activity during the day. The kitchen, dining room and lounge are located on the ground floor and the views appear across towards the porch which forms a large terrace, shaded outdoor space this is also the natural system for sun protection space inside seating. In the warmer seasons, the ability to fully open the closure of glass between the living room and terrace. The floor keeps the room and a bathroom.

Quality Design

The kitchen is usually presented as a collection of living room, but maintaining some visual relationship with the possibility of sectors. A spacious and functional kitchen allowing guests to make life very characteristic trait of our culture.

From the lobby there is direct access to the kitchen is'articula the living area and stairs to the first floor where the rooms area.

BE URBAN houses have got three bedrooms and two bathrooms. One of the rooms are suites with dressing room and bathroom. The other two bedrooms share the second bathroom.



Multifunctional

The cranes of highly stylized lines, consistently responding to the criteria of organization of the rooms. While the rooms have windows that enmarquen partially bounded the view on the other end of the hall and porch open widely toward the environment.

The interiors are defined with resistant materials, high quality and durability to ensure the proper maintenance of the house. The width of the spaces of the house as well as the generous natural lighting and ventilation of all the rooms are a guarantee of comfort and wellbeing. The clarity in the organization of space combined with quality materials and detail you get a superb quality of life.



Finishings

The collections of the SIFERA houses offers a degree of customization to adapt them to your taste. Not only will you be able to choose from different models of houses, but also you will have the chance to decide from a wide range of finishings for the facade and for the interior areas and from different kitchen and bathrooms manufacturers. Combining the variety of options offered we obtain a wide range of solutions, so as to adapt the house to you.



Facade finishings

The facade materials mark the character and shape the exterior. The material of the finishing and its chromatic nature help integrate the dwelling to its surroundings and above all, allow the house to have your desired aspect.



The use of natural high quality materials of details guarantee resistance and maintenance.

You can choose from wood, stone, stoneware and monolayer for the exterior finishings materials.

Interior finishings

The interior finishings of the house set the atmosphere of our vital space. The predominant element in the comfort sensation is the pavement, constantly in contact with our body and setting the sonority of our steps. The range to choose from in this case offers very heterogeneous possibilities according to your priorities:

The natural wood pavement offers a warm and comfortable environment, whilst the ceramic materials are more resistant. You can choose from different options of wood applications: floating or parquet floors, but you can also choose from different kinds of stoneware.

Range of kitchens and bathrooms

The kitchen and the bathrooms have been designed focusing in functionality and comfort. These are the areas that require technical equipment and to guarantee the highest quality we chose from a range of the most prestigious companies.:



BULTHAUP A company that is characterized for being ahead of their time. The soundness of the company's own philosophy and constant innovation act as driving forces of the brand.

www.lb-bulthaup.com



AURÓ A symbol of real quality, the highest aesthetic and technical exponent. Auró, revolutionizes vital space in your dwelling with the purest and most minimalist design, developed following your own requirements and thought to be perfect for your space.

www.auro-cuines.com



ROCA Founded in 1917 and based in Barcelona, Roca has 65 production centres spread across 17 countries worldwide. In recent years Roca has experienced an extraordinary international expansion that has been present in 135 markets. Roca is a landmark in progress, strength, excellence and a world leader in the definition of bathing areas.

www.es.roca.com



Cosmic is the avant-garde brand in the bathroom sector, with designs which understand bathrooms as functional and practical areas, creating thus individual well-being and manufacturing all the elements with these priorities: quality, warmth and design.

www.icosmic.com

useful surface

ground floor

1. lobby	3.50 m ²
2. dining	40.00 m ²
3. kitchen	18.00 m ²
4. laundry	2.20 m ²
5. cleanliness	1.60 m ²

first floor

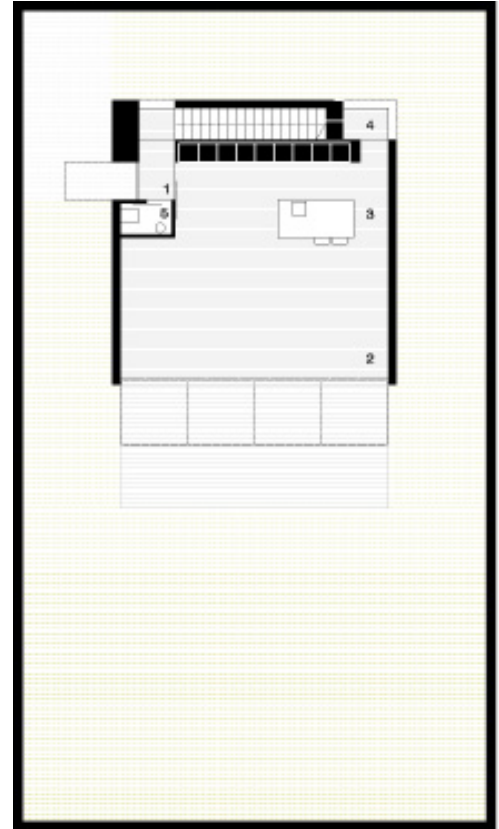
6. suite room	12.60 m ²
7. suite bathroom	6.30 m ²
8. room 1	10.50 m ²
9. room 2	11.70 m ²
10. bathrooms 1	7.40 m ²
11. circulators	19.00 m ²

total 132.80 m²

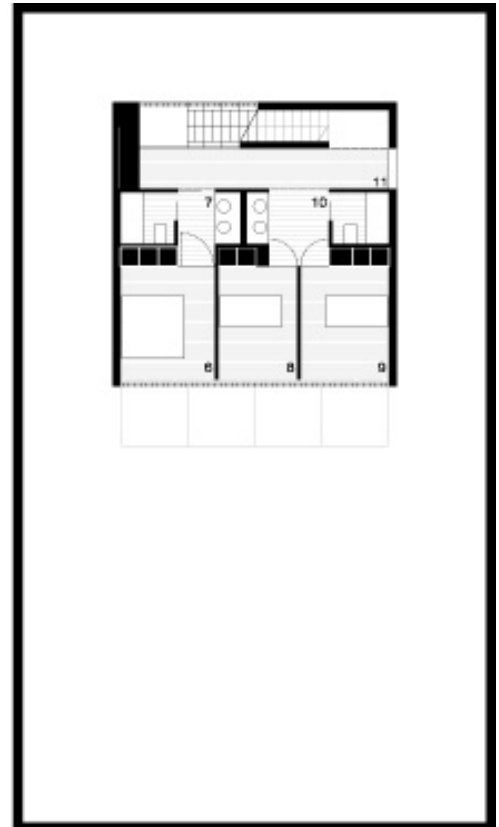
built areas

interior 162.00 m²

total 162.00 m²



Planta baja e_1/1000



Planta primera e_1/1000

useful surface

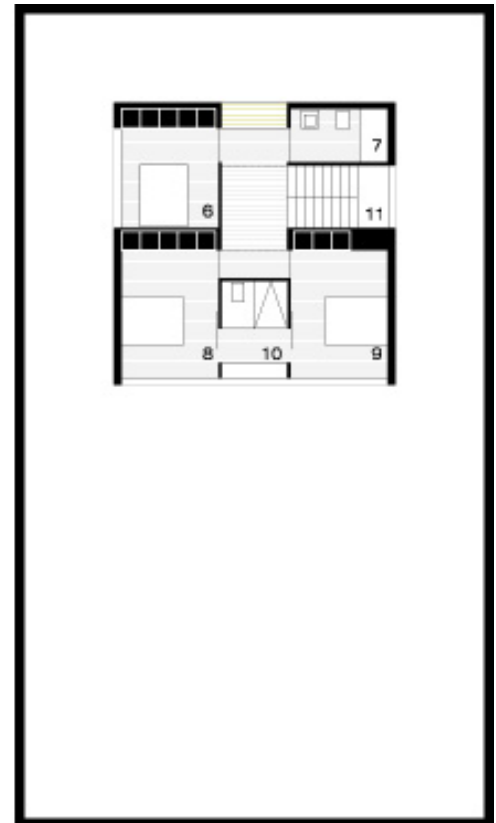
ground floor		exterior	
1. lobby	5.55 m ²	12. porch access	9.00 m ²
2. dining	35.00 m ²		
3. kitchen	7.70 m ²		
4. laundry	8.25 m ²		
5. cleanliness	1.90 m ²		
first floor			
6. suite room	15.30 m ²		
7. suite bathroom	5.30 m ²		
8. room 1	14.60 m ²		
9. room 2	14.60 m ²		
10. bathrooms 1	6.50 m ²		
11. circulators	14.00 m ²		
total	128.70 m ²	total	9.00 m ²

built areas

interior	128.70 m ²	exteriores (50%)	4,50 m ²
total (exterior 50%)	157.50 m ²		



Planta baja a_1/200



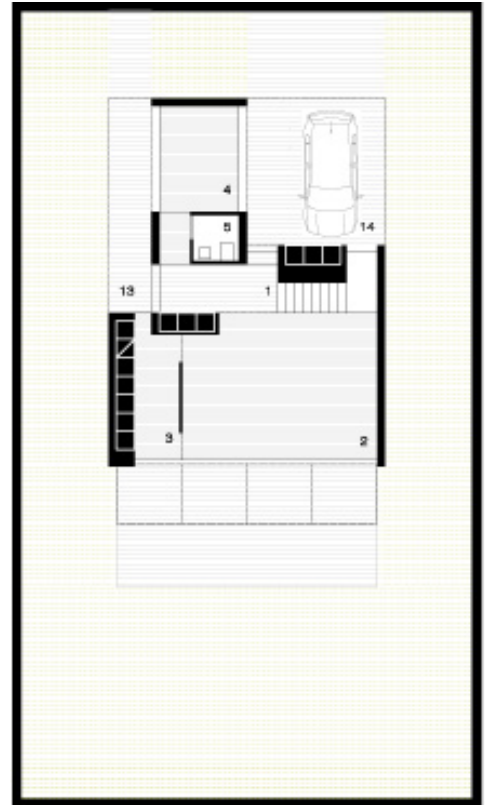
Planta primera a_1/200

superficies útiles

planta baja		exterior	
1. lobby	4.00 m ²	13. porche acceso	9.90 m ²
2. dining	37.00 m ²	14. car porch	21.60 m ²
3. kitchen	9.55 m ²		
4. laundry	10.65 m ²		
5. cleanliness	2.25 m ²		
planta primera		exterior	
6. suite room	14.60 m ²	15. terrace P1	6.00 m ²
7. suite bathroom	6.50 m ²		
8. room 1	14.60 m ²		
9. room 2	14.40 m ²		
10. room 3	14.40 m ²		
11. bathrooms1	6.40 m ²		
12. circulators	16.00 m ²		
total		total	
	150.35 m ²	37.50 m ²	

built areas

interior	150.35 m ²	exterior (50%)	18.75 m ²
total (exterior 50%)		213.10 m ²	



Planta baja e_1/200



Planta primera e_1/200