

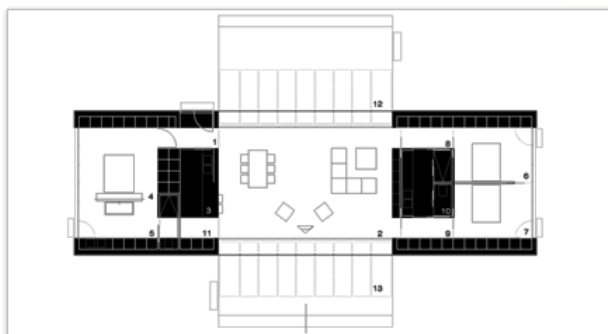


Function and design

The IN_NATURE Collection offers a range of houses that incorporate natural areas and landscapes into our daily life. The In_01 house in this Collection is one that enjoys the nature and landscape.

The In_01 house, is linear and simple allowing a large opening to its surroundings merging the boundaries between the exterior space and the interior space. Function and design come together in this case to form a house that optimizes its excellent surface avoiding the most typical pathways.

Thought for living



The house is designed into three clearly different sectors: the dining/living room/kitchen in the center, the bedroom suite on one side and the two bedrooms sharing a bath on the other side. This setup allows the use of the living room and the kitchen as a family meeting place. This concept is typical of most old country houses, it allows a greater adaptability of different living requirements programmed throughout our lives.

Perfect for families

The m2 bedroom suite, has a wide wardrobe area and a complete bathroom. The bathroom has an enclosed shower and a toilet area that qualitatively improves the hygiene and the use of this space. The space set for the bath and basins is designed as a place for relaxation and wellness. A clean and pure atmosphere, clear and simple geometry and chromatic light.

The two double bedrooms have their own dressing area and share a bathroom. The shower and the toilets are organized in separate enclosed areas to facilitate the shared use of the bathroom. You can access the toilets from a wide area with basins and the dressing room from each bedroom.

Living room and garden at the same time...



The most unique feature of the house is the living room: very wide, clear, light and extensible to the outer space. The sun protection closings offer shade for the outdoor terrace.



The kitchen is integrated with the dining area by means of a multifunctional wall, with the possibility to section the space with its discrete and elegant lines. The island is configured as a working area incorporating a bar and stools which share the moments of cooking.

The size of the space and the modern technologies are used to make our day to day life more comfortable and easier. Security is another distinguishing feature of the In_01 house in this collection. A house designed as a place to improve our quality of life blending the interior space with the garden and immediate surroundings. The same system that opens the house to its surroundings, will close completely as a security measure during the night or for holiday periods.





Finishings

The collections of the SIFERA houses offers a degree of customization to adapt them to your taste. Not only will you be able to choose from different models of houses, but also you will have the chance to decide from a wide range of finishings for the facade and for the interior areas and from different kitchen and bathrooms manufacturers. Combining the variety of options offered we obtain a wide range of solutions, so as to adapt the house to you.



Facade finishings

The facade materials mark the character and shape the exterior. The material of the finishing and its chromatic nature help integrate the dwelling to its surroundings and above all, allow the house to have your desired aspect.



The use of natural high quality materials of details guarantee resistance and maintenance.

You can choose from wood, stone, stoneware and monolayer for the exterior finishings materials.

Interior finishings

The interior finishings of the house set the atmosphere of our vital space. The predominant element in the comfort sensation is the pavement, constantly in contact with our body and setting the sonority of our steps. The range to choose from in this case offers very heterogeneous possibilities according to your priorities:

The natural wood pavement offers a warm and comfortable environment, whilst the ceramic materials are more resistant. You can choose from different options of wood applications: floating or parquet floors, but you can also choose from different kinds of stoneware.

Range of kitchens and bathrooms

The kitchen and the bathrooms have been designed focusing in functionality and comfort. These are the areas that require technical equipment and to guarantee the highest quality we chose from a range of the most prestigious companies.:



BULTHAUP A company that is characterized for being ahead of their time. The soundness of the company's own philosophy and constant innovation act as driving forces of the brand.

www.lb-bulthaup.com



AURÓ A symbol of real quality, the highest aesthetic and technical exponent. Auró, revolutionizes vital space in your dwelling with the purest and most minimalist design, developed following your own requirements and thought to be perfect for your space.

www.auro-cuines.com



ROCA Founded in 1917 and based in Barcelona, Roca has 65 production centres spread across 17 countries worldwide. In recent years Roca has experienced an extraordinary international expansion that has been present in 135 markets. Roca is a landmark in progress, strength, excellence and a world leader in the definition of bathing areas.

www.es.roca.com



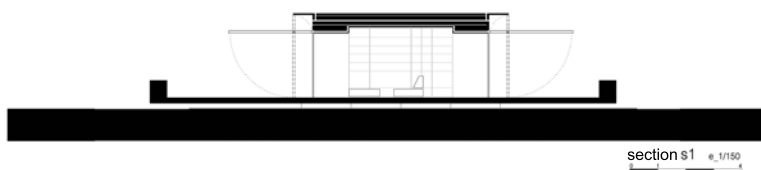
Cosmic is the avant-garde brand in the bathroom sector, with designs which understand bathrooms as functional and practical areas, creating thus individual well-being and manufacturing all the elements with these priorities: quality, warmth and design.

www.icosmic.com



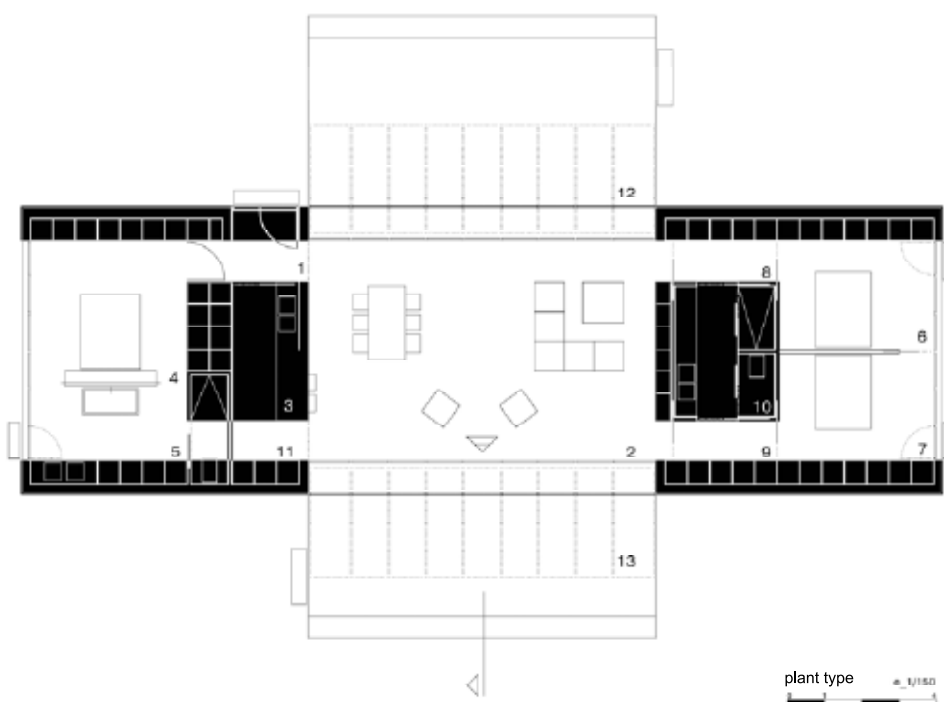
'M' VERSION
floor space

indoor		outside	
1. access	5.00m ²	12. terrace 1	44.40m ²
2. dining	50.00m ²	13. terrace 2	33.85m ²
3. kitchen	8.40m ²		
4. room suite	19.90m ²		
5. bathroom suite	14.00m ²		
6. room 1	14.50m ²		
7. room 2	14.50m ²		
8. wardrobe 1	4.85m ²		
9. wardrobe 2	4.85m ²		
10. bathroom	9.35m ²		
11. laundry	3.00m ²		
total 148.35m ²		total 78.85m ²	



built areas

inside	174.40m ²	outdoor (50%)	7.90m ²
total (external 50%)		182.30m ²	





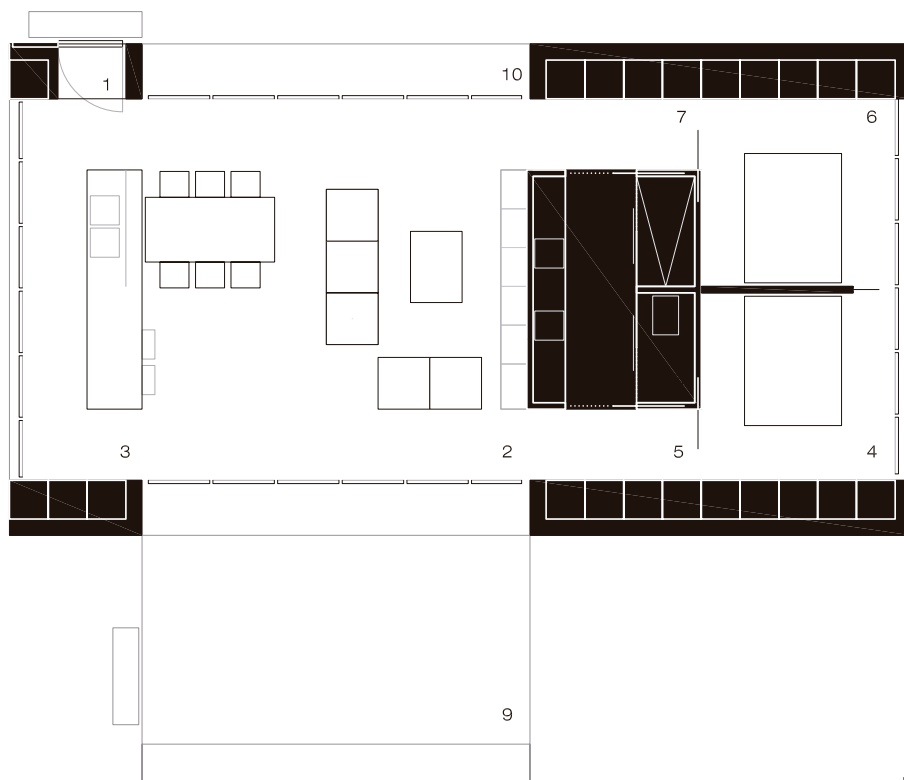
'S' VERSION

floor space

indoor		outside	
1. access	1.10m ²	9. terrace 1	27.80m ²
2. dining	35.40m ²	10. terrace 2	4.80m ²
3. kitchen	11.85m ²		
4. room 1	10.55m ²		
5. wardrobe 1	4.35m ²		
6. room 2	10.55m ²		
7. wardrobe 2	4.35m ²		
8. bathroom	8.75m ²		
total	86.95m ²	total	32.60m ²

built areas

inside	96.45m ²	outdoor (50%)	4.80m ²
total (external 50%)		101.25m ²	



ground floor
e_1/100